

Pacific Northwest Chapter



NEWSLETTER

April 1992

PRESIDENT'S MESSAGE

Dear friends and fellow collectors,

It's been a beautiful Spring for the mineral collector. While skier and public water departments lament the early demise of the snow pack, field collectors find bonus time added to the start of their season. Most mountain localities are opening up three to four weeks early this year. Hopefully those of you who aren't pounding the hills early are at least attending FM functions to hear the half believable tales of those who are. A dozen or so FM members had the opportunity to collect together recently on an outing to the Green River Gorge. Everyone had a thoroughly good time and most found good representative realgar crystals. A number of FM field trips are planned on the summer schedule.

The spring business meeting in Olympia was quite productive. We were able to finalize a working budget for the remainder of the 1992 year. We learned that plans for the 1992 symposium are progressing quit well thanks to the diligent efforts of Mike Groben. The date, facility, speakers, and floor dealers have all been secured. This year's theme of Accessible Mineral Localities should provide an excellent program.

The schedule of FM events leading up to the fall symposium is loaded with activities including; two business meetings with "mini" programs, one in June and the other in August; social gatherings at Norm Radford's featuring a program, mine tour, and collecting on some local mine dumps, and at the Lindell's with a potluck picnic and mineral swap meet; an invite back to Semantics by Ken Roberts for another private showing of minerals; a work party to make liners for our FM mineral cases, and the annual work party to clean up the Washington Pass area; and finally to top things off, Bob Jackson has graciously invited us to schedule collecting trips to two of his claims. All in all a packed summer.

One last thought to close this letter. The Pacific Northwest Chapter of the Friends of Mineralogy is a non-profit organization. It is funded solely by a portion of your dues and by your donations of time and materials. Our entire schedule of activities and this news letter are run without any other support. To a large extent the symposium is also supported by your generosity. In order to make this organization and especially the symposium a success, we need your help. First, donate some tine. find a part of this organization that you feel is especially important of simply enjoyable and PARTICIPATE. Second, donate a really good specimen to the symposium auction, (make it hurt a little). Set aside a specimen now and give it to an officer of FM at the next meeting or simply bring it with you to the symposium. Remember, your gifts to this organization make it happen.

Keep Rockin'
Jonh

MINUTES OF THE BUSINESS MEETING

March 21, 1992

President John Lindell opened the meeting with announcements and an updates. There is a correction to the January minutes. The Locality Preservation Committee will not be chaired by Nevan Bacon. In addition, the picnic and swap meet at the Lindell's scheduled for May 2nd has been moved to May 16th to avoid a conflict with the NORTHWEST MICROMOUNTERS meeting. (See calendar of events for further information).

During the meeting, the secretary presented background information on why we are having a problem reconciling our membership list with the national Friends of Mineralogy. Difficulties have surfaced because of the time of the year we send the national organization their share of the dues and a strict interpretation of national FM bylaws. There was much debate and some pretty militant statements made by some long standing FM members. In the end, we voted to mail the national treasurer additional funds to bring the two membership lists together.

There were no reports from the Locality Preservation or Education committees. Mary Foster discussed progress leading up to the Puget Sound Regional Gem and Mineral Show. This year it will be in the Exhibition Hall at the Seattle Center September 18-20th. The question was raised, "does FM want to join our symposium with that of the Seattle show?" The consensus was that we do not as we would loose our satellite dealers. However, when the Seattle show is moved to May in 1993, we may want to do a mini-symposium in conjunction. Mary Foster still needs to hear from you if you intend to put in a case in the Puget Sound Regional Gem & Mineral Show. Her phone number is (206) 362-0395.

There was discussion of the Department of Natural Resources effort to establish Natural Resource Conservation areas. As we all know, Bald Hornet, Mt. Teneriffe, and Bessemer Ridge are at risk. John Lindell was asked to write a letter to DNR expressing our concerns and if possible to attend the April 21st public hearing in Seattle.

It was mentioned that a fossil club is being formed in Seattle area. For additional information contact Rick Dillhoff or Dan Stewart.

John Lindell proposed that we establish an annual budget for the officers and the annual symposium. The pre-authorized budget would provide for ceilings on spending authority. The need to exceed a budget line item would require a vote. In this maner the organization would be able to control costs and better operate with a balanced budget. Bob Smith moved that the budget be adopted; it was seconded by Carl Harris; and, approved by the members present. A copy of the new budget follows in this newsletter.

During the program portion of the meeting Rudy Tschernich gave a brief report on the Tucson Gem and Mineral Show. In terms of new material, the most interesting were zeolites from Russia. Rudy had several flats of these attractive specimens with him that were for sale. (great stuff - ed.). Also of note, Rudy's excellent book "Zeolites of the World" is now available.

John Cornish gave a report on a major find of calcite crystals in a rock quarry 2 miles south of Monroe. The new find was first noted by members of the Everett Rock Club. On March 14th John Cornish opened up a vertical fissure 2' wide and 4' long lined with calcite crystals (up to 4"). The open fissure is filled with clay. The calcite crystals sit on chalcedony and fluoresce a pink color. The host rocks are volcanics of the Mount Persis group dated at 42 to 47 million years old.

Ray Lasmanis displayed two sliced slabs of massive sulfides from the Juan de Fuca Ridge spreading center 250 miles west of the Washington coast. The samples were collected by the Alvin submersible from sulphide chimneys in the "South and North Cleft" - sometimes referred to as "Black Smokers". The samples consists of sphalerite, wurtzite, pyrite, marcasite, and chalcopryrite.

In conjunction with the samples, a video tape titled "Hot Vents: The Magic of a Mountain" was also shown. The tape shows the discovery of deep sea hydrothermal vents on the Explorer Ridge by the submersible Pisces IV during June 1984. The locality is west of Vancouver Island, B.C., Canada. The tape was produced by Verena Tunnicliffe (Univ. of Victoria), Narrated by Maureen de Burgh (Univ. of Victoria), written and edited by Kim Juniper (Institute of Ocean Sciences, Sidney, B.C.).

R. Lasmanis
Secretary

1992 FM OPERATING BUDGET

This budget is the brain-child of President John Lindell. He, together with the other officers have been working on this as a model with which to build a solid financial foundation on which our organization can stand for years to come.

PNWFM ADOPTED OPERATING BUDGET

| | |
|---|-------------------------------------|
| EXPENSES | |
| ADMINISTRATION: | |
| PRESIDENT - Phone, Postage, Supplies | \$200.00 |
| V.PRESIDENT - Phone, Postage, Supplies | 75.00 |
| SECRETARY - Phone, Postage, Supplies | 75.00 |
| TREASURER - Phone, Postage, Supplies | 75.00 |
| BANK FEES | 100.00 |
| TOTAL | \$525.00 |
| PUBLICATIONS: | |
| NEWSLETTER | |
| SPRING - (4pgs) materials postage | (52.00)donated 33.00 |
| SUMMER - (3pgs) materials postage | (40.00) 33.00 |
| FALL - (4pgs) materials postage | (52.00) 33.00 |
| WINTER - (3pgs) materials postage | (40.00) 33.00 |
| TOTAL | (184.00)donated 132.00 |
| MEETING NOTICE - (1pg) materials postage | (7.50) 33.00 |
| DUES NOTICE - (1pg) materials postage | (7.50) 33.00 |
| PNW membership directory (4pgs)materials postage | (52.00) 28.60 |
| ADDRESS LABELS | 21.00 |
| TOTAL | \$247.60 (251.00)donated |

| | |
|---|---|
| NATIONAL DUES(approx. 110 members) @ \$5.00 each | |
| TOTAL | \$550.00 |
| SYMPOSIUM Break even budget based on \$4500.00 income and limited to \$4500.00 maximum expenses. (Deficit would show here) | -0- |
| MISCELLANEOUS Currently unfunded item for future expenditure allocated by vote of membership or officers. (i.e. case liner, tee shirt project, educational displays, etc.) | -0- |
| TOTAL | \$1322.00 (251.00) currently donated |
| REVENUES: | |
| LOCAL DUES approx. 110 members @ 15.00 each | \$1650.00 |
| SYMPOSIUM Break even budget. (Excess would show here. Would transfer directly to next year's symposium budget. | -0- |
| MISCELLANEOUS Revenues provide by money making projects. (i.e. case liners, tee shirt project, sales on budget, magazines, etc. | -0- |
| TOTAL | \$1650.00 |

CALL FOR PAPERS--14th MINERALOGICAL SYMPOSIUM

The fourteenth Mineralogical Symposium sponsored jointly by Friends of Mineralogy, the Tucson Gem and Mineral Society, and the Mineralogical Society of America will be held in conjunction with the 39th Tucson Gem and Mineral Show, Saturday February 13, 1993. The topic of the symposium will be garnet--the theme mineral for the show. Papers on the descriptive mineralogy, paragenesis, classic and new localities, etc. are invited. An audience of knowledgeable amateurs as well as professional mineralogists and geologists is expected.

If you wish to present a paper, please write or call (immediately) Dr. Karen Wenrich, Chairperson (USGS, Mail Stop 939, Federal Center, Denver, CO 80225; 303-236-1563) with your topic, a few sentences describing the paper, and your address and phone number at which you may be contacted. Presentations will be 15 or 20 minutes in length followed by a period for questions. Upon acceptance of topics all authors will be required to submit a 200-300 word abstract by September 30, 1992 (firm date). Those abstracts deemed to be scientifically sound and substantive by the editor of the Mineralogical Record will be published in the January/February issue, which will be available for sale at the 39th Tucson Gem and Mineral Show.

MINERALOGY EDUCATION

The Following is a letter from George Gerhold, Associate Dean of Arts and Sciences at Western Washington University in Bellingham, Washington. It is reproduced here because of the involvement of the Friends of Mineralogy in the antecedent to this project.

MINERALS on CD-ROM
by George Gerhold

Some of you may remember that several years ago the Friends of Mineralogy agreed to cooperate with me in attempting to produce an interactive video disk devoted to mineralogy. Unfortunately, my proposal to the National Science Foundation was not funded--in part because of the expense involved in collecting and reproducing 50,000-100,000 images.

In the intervening years a number of developments--mainly technical--have occurred which have led to a reinitiation of the project in modified form. CD-ROM technology has advanced to the point where a CD disk can be used to store images of quality comparable to video disk, although the capacity is much less. Production of such disks does not require as much exotic technology. I am involved with the National Geographic and IBM on our third such project; the first is the widely distributed "Mammals: A Multimedia Encyclopedia."

These changes make it possible to undertake a project without significant outside funding. Mr. Louis Perloff has very generously provided almost 2,600 images from his collection for use (as well as invaluable suggestions which supplement my limited knowledge in the field). Internegatives suitable for digitizing and storage on CD-ROM have been produced thus far.

The plan is to combine these images with appropriate other information (both text and graphic) on a mineralogy CD-ROM. This is then to be marketed at a low price; the price will be such as to cover costs (but not time) and to provide money for a second disk if interest justifies. At the moment I would guess that the price will be about \$50.00.

There are many questions which need to be addressed. There is a trade-off between expense of delivery hardware (and thus nature and number of potential users) and image quality. The optimum choices appear to be either 640 x 480 x 256 (the XGA standard in the DOS world) or DVI. The former is the standard on the current multimedia and school market machines; the latter allows much better color (comparable to video disk) and many more images per CD but requires special hardware which may or may not be widely purchased.

Of more interest to most of you are questions about content, and this is the area where your ideas would be of immense value. When planning a book perhaps the vital question is, what is the target audience? With computerized multimedia applications that can be changed to, list all the target audiences. Thus, the same information and images can be viewed as raw material for an unlimited variety of non-exclusive organization and presentation schemes. Ideally this product will be for everyone who is interested or potentially interested in mineralogy.

That is the potential, but how can that be approached? Given a minimum of about 2,600 images of microsamples of about 600 minerals, what should be added and linked to maximize the utility of these to the widest possible audiences? Before answering that you should note that one can use text, diagrams, movies/animation, and sound to present additional information. The following list includes suggestions from several sources:

crystal morphology/form
unit cell contents
illustrated glossary of mineralogical terms
pronunciation guide to mineralogical terms
identification game

At this time I am not asking for any formal action or support from the organization. Rather I am reporting that something which you supported in the past has not gone for naught but has been transformed. Further, I am asking you individually for your input and ideas. I hope, by this project, to produce a path which will make mineralogy interesting to a wider audience and will lower the barriers to participation by providing a private and relatively painless way to learn how to listen to, read about, and talk mineralogy.

George Gerhold
829 Racine
Bellingham, WA 98226

TREASURER'S REPORT

BEGINNING BALANCE \$1079.44

EXPENDITURES:

National dues \$270.00
Newsletter postage \$63.14
Bank charges \$15.00

Total Expenditures \$349.14

DEPOSITS:

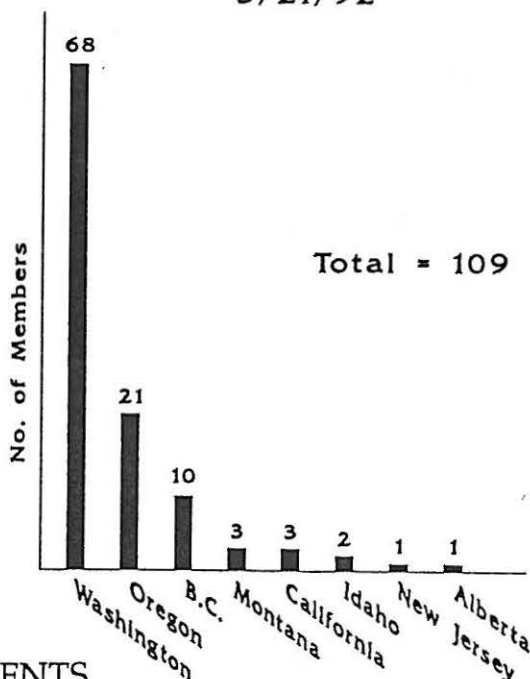
Dues \$720.00
Rocks & minerals \$27.85
WA Issue and Misc.

Total Income \$747.85

ENDING BALANCE \$1478.15

Cheryl Stewart,
Treasurer

Pacific Northwest Chapter
Friends of Mineralogy
Total Membership
3/21/92



CALENDAR OF EVENTS

May 2nd

PNW MICROMOUNTERS semi-annual meeting will be held in Vancouver, WA. at the Clark County P.U.D building, 1200 Fort Vancouver Way from 9:30am to 9:00pm. All interested FM members are invited to attend. (see map in the November newsletter).

May 16th DATE CHANGE

Please note this date has changed from the last news letter. The change was made to avoid a conflict with the meeting of the PNW MICROMOUNTERS. (see above).

Kristin and John Lindell will host a picnic & mineral swap meet on their property at 25714 268th Ave. SE, Ravensdale, Wa. Weather permitting, we'll tailgate minerals in the pasture. If it rains we'll move indoors. There will be a fruitwood bonfire going all day for roasting hot dogs or marshmallows. Bring your own picnic and supplies or bring enough for a potluck. John and Kristin's collection will be back out on private display for the first time in three years. Come early - stay late and bring plenty of minerals to sell or trade. (see map in the February newsletter).

May 30-31

Norm Radford will host a gathering at Silver Capital Arts, 6th and Bank, Wallace, Idaho. A "mini" program is planned starting at around 3:00pm on Saturday. Norm will also try to have special cases in his museum highlighting minerals from the local area. On Sunday an underground mine tour will be arranged at the Sierra Silver mine in the morning. Cost will be approximately \$5.00 per person. Sunday afternoon we'll do some local mine dump collecting. Please contact John Lindell (206) 432-4939 or Norm Radford (208) 556-7081 if you plan to attend so that tour space can be reserved. Norm can also supply local hotel and camping information.

June 13th MEETING NOTICE

The next regular business meeting of the Chapter will be in Vancouver, WA. at the Clark County P.U.D. building located in Orchards. The meeting will start around 10:00am and end around 3:00pm. The meeting will be chaired by Vice-president Mike Groben in the absence of President Lindell. Seeing as how the symposium is getting closer and closer this meeting is very important and should be attended by all.

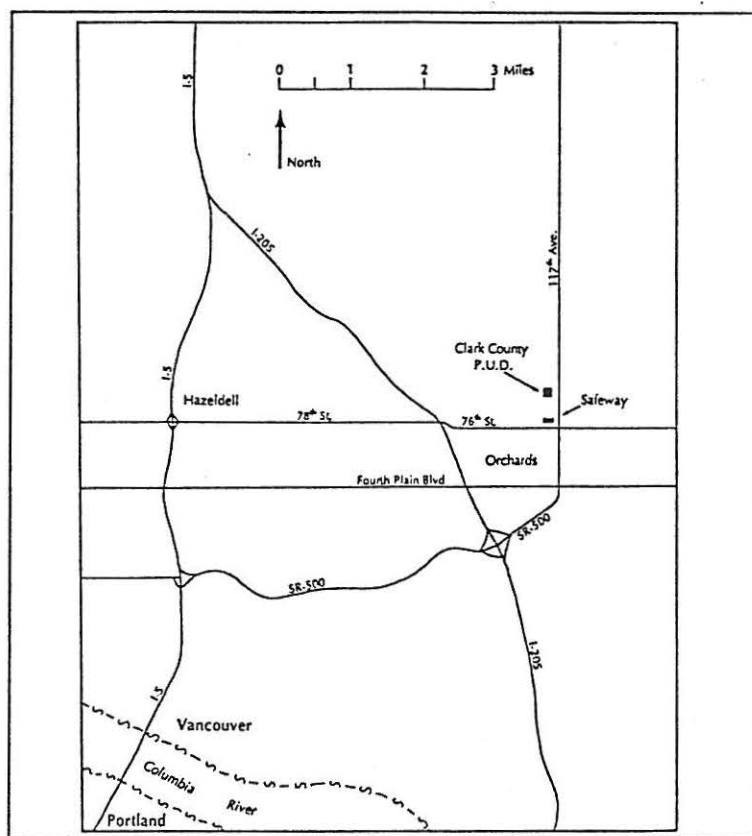


Figure 1 Location map for the June FM meeting.

July 11th

There will be a work party to build new case liners for our FM mineral cases. The work party will be at Bayless Bindary, 501 SW 7th, Renton Washington at 1:00pm. Please send or bring enough cloth material to line at least 2 cases plus \$12.00 to cover cost of book board and glues. One set of liners will be yours to take home with you. The second will be made for

the organization to use. Please contact John Lindell concerning what types of material will work best and how much is needed. We are hoping for at least 12-15 people to participate so that we can build at least 15 liner sets for FM. WE NEED YOUR HELP on this one.

July 31st, August 1st & 2nd

PNW FM will again volunteer its efforts in the third annual North Cascades clean-up near Washington Pass. Camp sites have been reserved for Participants at the Klipchuck campground for both Friday and Saturday nights. Clean-up will take place Saturday morning and early afternoon. Saturday Late afternoon and Sunday will be left free for collecting. Members Bob Boggs and Randy Becker will be on hand to identify those rare minerals you find and also to answer questions about the mineralogy of the area. Bring your own food, camping gear and collecting tool. Items needed for the clean-up will be provided.

August 10th & 11th

Bob Jackson has invited FM members (only) to visit the Rock Candy mine in Grand Forks, B.C., Canada. Bob is currently working this classic old locality for specimens. You will have an opportunity to do your own field collecting for fluorite and barite. Come prepared to car camp near the locality. Bring your own supplies and collecting tools. Call Bob Jackson or John Lindell for More detail and directions.

August 15th

Bob Smith will host a regular business meeting and a "mini" program at the Science Building on the Seattle University campus in Seattle, WA. (10th & E. Madison) We'll Finalize plans for the symposium at this meeting. Program will start at 10:00am.

September 25,26, & 27

The 18th Annual PNW Friends of Mineralogy Mineralogical Symposium at the Sherwood Inn, Tacoma, Washington. This year's theme is Accessible Localities. Full details will follow shortly in a separate mailing.

WANT ADS

"Semantics" and Ken Roberts Mineral will co-host a special mineral showing for FM members only on Saturday May 2nd at Semantics, 116 S. Washington, Pioneer Square, Seattle, WA. The shop will be open to the general public until 5:00pm and open to FM members only from 5:00pm to 7:00pm. Also showing will be Mark Earnst from Tucson with an outstanding selection of meteorites, and Mark Costagnoli of British Columbia with crystalline gold specimens

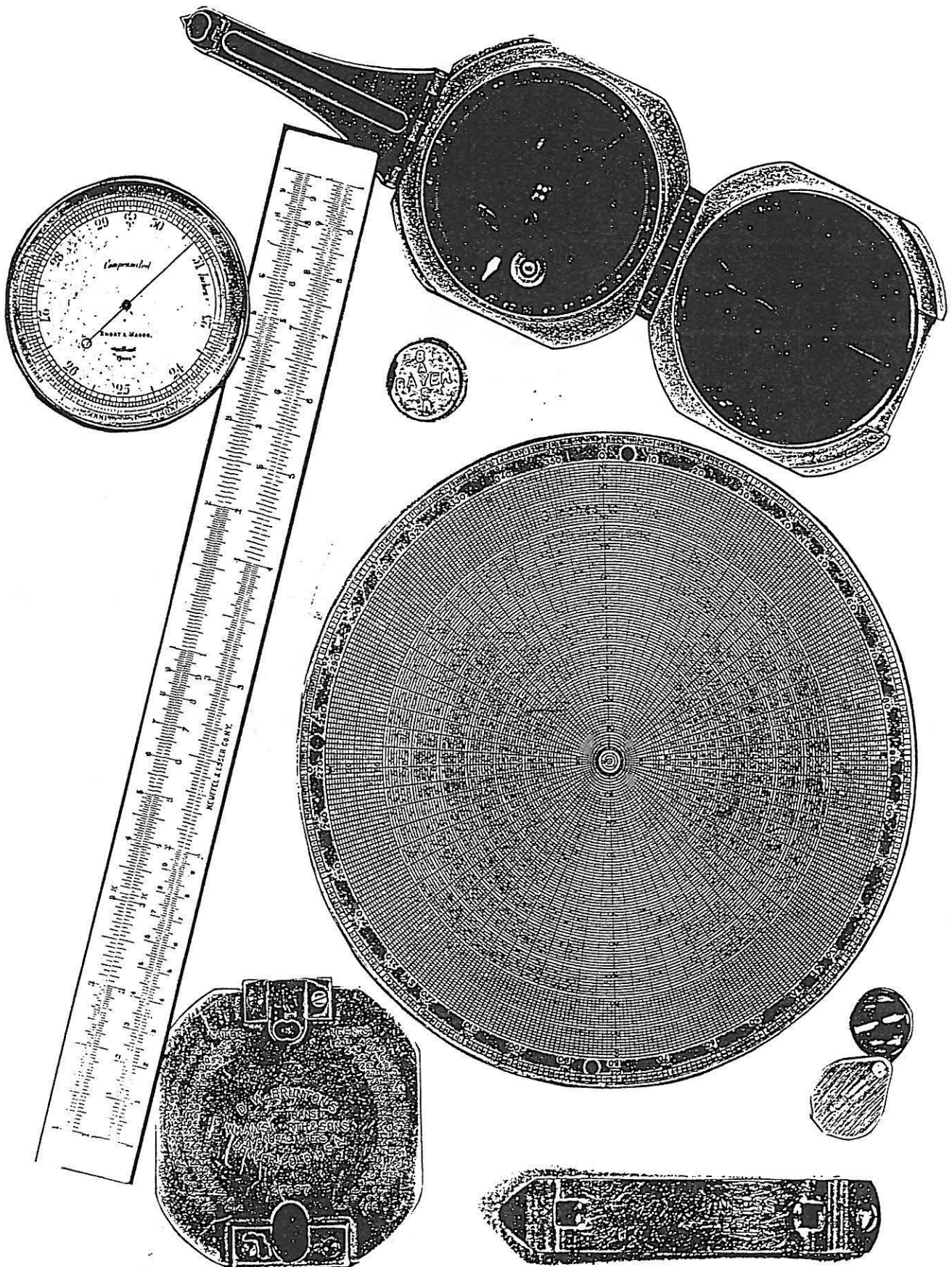
I have recently acquired over 3,000 old USGS reports and publications pertaining to the Geology and mineralogy of the western United States. These are available for sale and are priced individually. If you want it - I've probably got it!

Norm Radford - (208) 556-7081

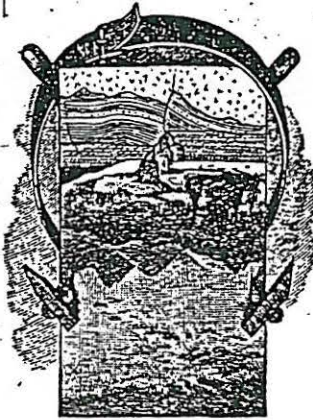
HEY, I'm still looking for that Rock saw.

Carl Harris - (206) 273-5318

TOOLS OF THE TRADE



1881

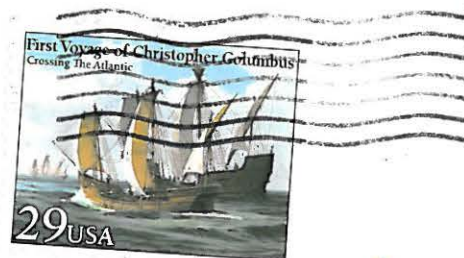


U.S.G.S logo



PACIFIC
NORTHWEST
CHAPTER

R. Lasmanis, Secretary
#155 - 800 Sleater Kinney SE
Lacey, WA 98503



Bob Meyer
16239 NE 18th St
Bellevue, WA 98008