



Pacific Northwest Chapter FRIENDS OF MINERALOGY

March 2003 Bulletin

28TH ANNUAL SYMPOSIUM AND MINERAL SHOW

A Resounding Success

The 28th Annual Pacific Northwest Friends of Mineralogy Symposium was enjoyed by 82 registrants at the Red Lion Hotel, in Kelso/Longview, Washington, September 27 through 29, 2002. The theme was "Inclusions: The Inside Story." A total of 18 displays were presented which included several presented by Symposium speakers. Once again, we thank the Mt. Baker Club for loaning us display cases.

There were three dealers on the main floor: Harvey Gordon Minerals, Lehigh Minerals, and Oxcart Minerals. As usual, our floor dealers brought a great selection of material from well-known localities and some new finds from both new and old localities. Just off the main floor in the North Wing of the hotel there were 15 Satellite Dealers who brought a variety of minerals including selections from commercially mined localities, private collections, and various discoveries by Northwest field collectors. We thank all of them for their part in making this a very successful symposium.

Presentations began Saturday morning when Master of Ceremonies, Bill
continued on page 4

PACIFIC NORTHWEST
CHAPTER FM
BOARD MEMBERS

Jim Etwiler
President

kd7bat@arrl.net

Aaron Wieting
Vice President

pdxpounder@hotmail.com

Karen Hinderman
Secretary

gkmhind@gte.net

Bill Dameron
Treasurer

baritebill@aol.com

Sharleen Harvey
Chairman of the Board
bill-sharleenharvey@
worldnet.att.net

IN THIS ISSUE

The President's Message	2
2003 Symposium	3
Summer 2003 Field Trip	4
Rice Museum's Petrified Wood Gallery Grand Opening	5
Dues Form	6

John Lindell - 2002 Noble Witt Award Recipient

The Pacific Northwest Friends of Mineralogy chapter was proud to announce John Lindell as the 2002 recipient of The Noble Witt Award. John has been a chapter officer in several positions including president and in recent years has been symposium chairman, chapter secretary, newsletter editor, field trip leader. In addition, he has hosted Friends of Mineralogy meetings at his home. John has volunteered at the Pacific Mineral Museum frequently.

It was recently learned that John has attended 26 of the last 28 symposiums. He has been, and continues to be, a contributor to our annual Symposiums, providing artwork and production for T-shirts in addition to other Symposium Committee duties.

The Noble Witt Award also recognizes John's many contributions towards the collection and preservation of mineralogical specimens. As a dealer, John has shared these specimens with the chapter and frequently donated specimens.

John has long been a supporter of the Pacific Northwest Friends of Mineralogy Chapter and this award recognizes just a small portion of those efforts.

The first newsletter of the year is a great opportunity to review what we did last year and look at what is planned for this year. A chronological review starts with the Tucson Show. Several of our officers attended the National FM board meeting and participated in the discussions there. Several other members joined the officers to attend the National Symposium and National membership meeting. As suggested at our fall symposium, we held our summer meeting in conjunction with the AFMS/NFMS combined Annual meetings in Port Townsend, WA. Our purpose was to extend our outreach to other rock/mineral groups and create some synergy. From that aspect the meeting was a success since several non-members did attend. An added bonus was the members from two other FM chapters that also attended. Later in the summer we held our North Cascades cleanup coordinated with the US Forest Service. As usual, we had a wonderful campout and fun mineral collecting. The 28th annual Symposium, "Inclusions, the Inside Story" highlighted our fall activity. Continuing our educational and outreach activities, we participated in the 48th Annual Seattle Regional Gem and Mineral Show (SRGMS).

No review would be complete without extending some thank yous for outstanding efforts that benefit all of us. Jade Wieting for newsletter editor; all of the members of the Symposium Committee for being flexible and making it happen; Karen Hinderman for accepting the Secretary's job; John Cornish for chairing the Cleanup; Jade and Aaron Wieting for organizing the Cleanup breakfasts and the potluck dinner; Rusty Etwiler for representing PNWFM at all the SRGMS meetings and all the members that supplied display cases and labor for the show.

For 2003, we can report that the chapter was again well represented at the National FM meetings in Tucson. Art Soregaroli joined Bill Dameron and Sharleen Harvey as National FM directors and your president attended the meetings as well. A look forward shows that we have a full plate of activities before us. The Seattle Regional (SRGMS) has decided to add a spring show April 26-27. Rusty Etwiler has been contacting members to provide display cases and volunteer time to support our educational goals. See the article about a field trip elsewhere in this newsletter. The annual North Cascades cleanup is scheduled for August. The committee is working on the 29th Symposium "Minerals, of China" scheduled for September 26-28. (Don't forget that we hold elections this year, also). And last on the list is the fall SRGMS show October 31- November 2. When contacted by one of the above committees, please respond by helping out so we can build a better PNWFM.

In addition to the above planned activities, we have been contacted by Portland Regional Show committee to see if there are some activities that PNWFM could bring to that show that would benefit both organizations. The Board is reviewing this.

-- Jim Etwiler, President, PNWFM

Upcoming Events

April 26 - 27, 2003 -- Seattle Regional Gem and Mineral Show

Contact Rusty Etwiler for details (see page 5).

July or August -- Montana Collecting Field Trip

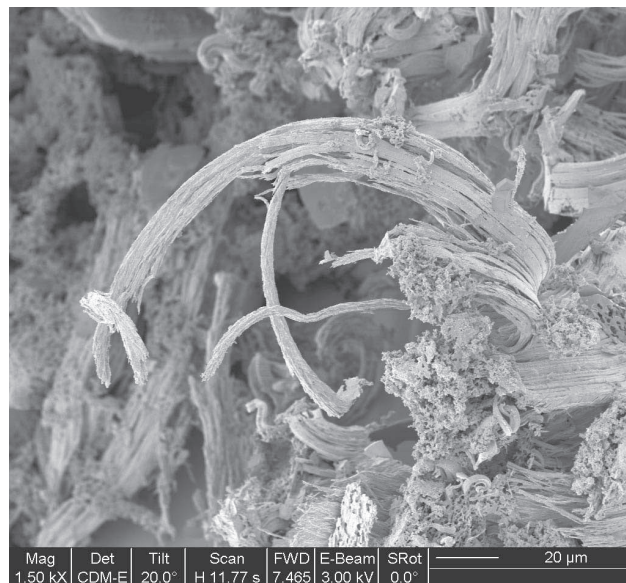
See page 4.

August 8-10, 2003 -- Washington Pass Clean-up

Details in the next newsletter.

September 26 - 28, 2003 -- Symposium

Minerals of China





Recently improved trade relations with China have been a boon to mineral collectors as some truly spectacular finds have been discovered and made available to museums and collectors. Hence, this year's symposium highlights the "Minerals of China". Rock Currier and Bob Cook will be our featured speakers discussing,

among other things, the evolving mineral market in China. Sunday speakers will be announced in the next newsletter.

As shown in the adjacent Symposium Committee list, the nucleus of the committee has come together and is already hard at work.

However, there are several positions that still need filling. Volunteers are encouraged to contact John Lindell (Lindell4@aol.com) or any of the PNWFM officers if they are interested in being involved in this year's symposium. High standards have been set at recent symposiums and we anticipate that this year's symposium will continue that tradition.



Additional show highlights and registration information will be included in the summer newsletter. Programs with registration forms will also be provided to all members in August.

Chairperson

John Lindell - Lindell4@aol.com

Facilities Coordinator

Sharleen Harvey
bill-sharleenharvey@worldnet.att.net

Speakers / MC

Bill Dameron
baritebill@aol.com

Dealers

Rudy Tschernich
tschernich@msn.com

Displays

John Lindell

Auctions

vacant

Auctioneer

vacant

Registration

Aaron and Jade Wieting
pdxpounder@hotmail.com

Set-up / Tear-down / Audio

vacant

Micromounters Program

Bob Meyer
pyrite111@aol.com

T-Shirt Design & Production

Jade Wieting & John Lindell

Competitions

vacant

Publicity

Aaron and Jade Wieting
pdxpounder@hotmail.com

What's New at the Rice Museum

by Sharleen Harvey

A Tualatin Valley Gem Club Showcase! PNWFM set the precedent by sponsoring a showcase and revolving exhibit at the Rice Museum; giving our visitors "something new" to see each time they come to the museum. The Mt. Hood Rock Club of Gresham sponsored a showcase with a revolving exhibit a little over a year ago and now Forest Grove's Tualatin Valley Gem Club has sponsored a case, built to match the FM case, and is committed to rotating exhibits. Community participation is the life-blood of every museum and we are forever grateful for the continued support of all of the club members!

The Dennis and Mary Murphy Petrified Wood Gallery! "FABULOUS SPECIMENS from around the world, NEVER BEFORE SHOWN!" The Murphys are residents of Tigard, Oregon and have been assembling this collection for the past 30 years. We are very proud they have chosen the Rice Museum as a home for their treasures. This exhibit opens to the public on January 18th.

For our coming "Geologic Rock Walk"! From Dale Hewitt, a 1600 lb. Opal Thunderegg and a 300 lb. Boulder of Obsidian from Lester Holbrook.

New additions of Northwest Minerals! Wonderful specimens donated by Washington state collectors Des and Virginia Hinds, Ray Lasmanis, Rudy Tschernich and Lester Holbrook include a fossil from Washington and spectacular minerals from Oregon, Washington, Idaho and British Columbia. In the "Rainbow Gallery" you will see a nice hunk of fluorite from Challis, Idaho glowing purple in the dark. This specimen was collected and donated by Aaron and Jade Wieting. In the basement fireplace, a gorgeous opalized log from Umtatum, Washington donated by Lester Holbrook.

Over 900 students visited the Museum "Rockpile" in November. We have not yet tallied the number for December. You can guess the coming request! The rockpile is becoming an institution at the museum. No student leaves without choosing his/her special "free" rock. Consequently, the pile needs frequent "transfusions" and we count heavily on all of you field collectors to drop in with a bucket or two of surplus material that will put smiles on young faces and possibly light a spark in a "new collector". Think about it the next time your spouse suggests cleaning out the garage or backyard! Thanks!

Inclusions: The Inside Story, a Success (cont'd from Page 1)

Dameron, welcomed all symposium participants and introduced John Koivula, who opened the Saturday morning program with a superb slide presentation of photomicrographs displaying the myriad forms that inclusions may take in minerals. John White followed with a visual tour "Inclusions as an Art Form" utilizing the skills of many talented photographers (photomicrographers!). John Koivula and John White also gave afternoon presentations on the "Microworld of Diamonds" and on classic "American Gemstone" localities, respectively. Sunday's Master of Ceremonies, John Cornish, began by introducing PNW Chapter member Rudy Tschernich who presented theories on the formation of plume, moss, and sagenite agate using the Graveyard Point, Malheur Co., Oregon locality as a primary example. Paul Schlichta, also a PNW Chapter member, gave a presentation on one of his life-long interests, inclusions in halite. Si and Ann Frazier presented a slide tour of various pseudomorphs, also discussing the difficulties in identifying original minerals in pseudomorphs.

The annual and lively specimen auction, spearheaded by Bob Smith, was held during the Saturday night banquet and netted \$1,420. The proceeds were used to help defray symposium expenses. Silent auctions were held throughout the weekend and added an additional \$120 to the PNWFM coffers. All specimens and mineral-related items were donated by dealers, members and friends.

Lorna Goebel, with assistance from Doug Merson and Ty Balacko, hosted the micromount table on the main floor. Bob Meyer organized the challenging contests and awarded two \$25 prizes at the Sunday morning meeting.

The Noble Witt award was presented this year to John Lindell for his long time support of the PNWFM Chapter and his many contributions towards the collection and preservation of mineralogical specimens. John has been a Chapter officer in several positions and is a continuous contributor to our annual Symposiums, providing artwork and production for T-shirts in addition to other Symposium Committee duties. It was recently learned that John has attended 26 of the last 28 symposiums.

Everyone enjoyed the interesting programs, lively speakers, spectacular slideshows, excellent displays and shopping for specimens with a great group of dealers. As always, old friends managed to catch up on latest finds and collecting tales.

Aaron Wieting, 2002 Symposium Chair

Summer 2003 Montana Field Trip

Lanny Ream and Aaron Wieting will be leading a week-long collecting trip to Western Montana this summer. Trip dates have not been set; however, plans are currently for July or August. Since snowpack is light this year, the trip should probably be conducted earlier to avoid the potentially devastating fire seasons that have plagued the western states over the last few years. The purpose of the trip is to introduce FM members who have not collected much in Montana to some classic Montana localities. Members who are interested should contact Lanny or Aaron to voice their preferences for trip scheduling.

The tentative itinerary so far consists of: Snowbird Mine -- Lolo Pass/Granite Creek -- Calvert Hill -- Crystal Park -- Black Pine Mine (tentative)/Gem Mtn. for the gem

minded -- Summit Mine/Radersburg

The trip would also include Crystal Park Hot Springs, the Montana Tech Mineral Museum in Butte, and a stop at Pipestone Summit to provide an overview of collecting in the Boulder Batholith area. Interested members are encouraged to contact either Lanny or Aaron to provide feedback on proposed collecting localities or to make recommendations for other localities. The official field trip will be limited to approximately one week. Hope to see you in Montana this summer!

Contact info: lanny@mineralnews.com or pdxpounder@hotmail.com

Dennis and Mary Murphy Petrified Wood Gallery

by Karen Hinderman

Upon entering the new gallery at the Rice Northwest Museum of Rocks and Minerals, in Hillsboro, Oregon, one's eyes are immediately drawn to the center display. Here, amidst three other large, beautiful specimens lies the grandest in the expansive room. It is a 3 ½ - 4 foot long, 2 foot diameter, gorgeous petrified wood log. The Quercus White Oak, from the Juntura Formation (Miocene, 25 MYA), is from the Stinking Water Mountains, Harney County, Oregon. One end of the log is polished brilliantly to display the beauty of the wood. After lingering here for several moments, one must move on to view the other 400 or so specimens.

Almost as impressive as the white oak are two large logs lying near each other where two glass cabinets come together in a corner. On one side is a Prunus Cherry from the Troutcreek Formation (Miocene), found near McDermitt airport site in Malheur County, Oregon. Next to the cherry lies a Sequoia Redwood from the Yakona Basalt Formation (Miocene), found near Rattlesnake Hills, Yakima County, Washington. Both logs are around 3 ½ feet long and 6 inches in diameter. Just the right size for my backpack!

One of the many rounds I found unique and interesting is a Cordaites Tree Fern from the Carboniferous (350 MYA), found in Coal Mine, Iowa. This specimen was unique because of the barite fans included. Another unique specimen is a 2 inch, brilliant green, Woodworthia Conifer. It was found in Mackelprang Wash, Arizona, and is dated Triassic (220 MYA), from the Chinle Formation. Although small, its' color is incredibly intriguing. Near the Woodworthia is a very nice assortment of 2-3 inch pine cones from Argentina. Some were whole, others halved, and some were cut and polished. All were lovely. Other notable specimens include the many tree ferns and palms. Also, the wide array of colors displayed in the wood and a wonderful variety of localities

displayed throughout this one room dedicated to wood.

Of course, while visiting the open house for the new gallery, I also strolled through the rest of the museum. Each time I visit, I am impressed at what has evolved since my last visit. In the downstairs mineral room there is a new specimen that is truly awesome. A Beryl Emerald with massive individual crystals from 3-5 inches long and ¾ - 1 inch in diameter. Although not as aesthetic as individual emerald crystals, this humongous beryl from Brazil is a wonderful sight. Also in this room, is the safe full of gold specimens. I never miss an opportunity to stand in awe while viewing the gold.

Next, upstairs and down the hallway, I visited the Rainbow Gallery, NW Minerals Gallery, Quartz Gallery, and finally the Lapidary Arts Gallery. All these rooms offer a nice variety of specimens. My son, Matt, spent at least 20 minutes learning about fluorescence in the Rainbow Gallery. Lastly, before leaving, we visited the gift shop. With a nice variety of mineral specimens, wood, books, jewelry, and more; all visitors will find something to purchase and take home. Although somewhat out of the way for most travelers, this museum is a must see for all rock enthusiasts.

To visit the Rice Northwest Museum of Rocks and Minerals:

Travel west from Portland, Oregon, on Highway 26. Take exit 61, Helvetia Road, turn right and then take an immediate left onto Groveland Drive. Drive 1.3 miles to the entrance. The museum is open to visitors Wednesday - Sunday from 1 P.M. to 5 P.M. Cost is \$4.50 adults, \$4.00 seniors/rock club members, \$3.00 students, and free for children under 6.

Visit their website: www.ricenwmuseum.org

Seattle Regional Gem and Mineral Show

PNWFM has participated with other clubs for many years to produce the Seattle Regional Gem and Mineral Show (SRGMS). PNWFM views this as an opportunity to further our educational and outreach goals. Representatives from PNWFM participate in the year-round planning that goes into producing this show.

For the last ten years or so the show has been held in Puyallup, Washington, the first weekend in November and will again this fall. In addition to the fall event, the SRGMS committee decided to hold a spring show to reach into the Seattle area. This **Spring Show** is scheduled for **April 26-27** in the Northwest Rooms at the Seattle Center. Since the SRGMS group is holding two shows this year, there is an increased need for help from participating clubs (in our

case PNWFM).

Participants who volunteer for two hours get into the show for free for volunteering two hours to the show. Other ways of participating include entering a display case or attending the planning meetings. Volunteering involves helping with one of the activities such as: setup, door access control security, or floor security (shoplifting patrol), welcome/information table, take down and cleanup. The convenient thing about volunteering is that for helping for two hours you are free to see the rest of the show without having to go anywhere else.

Please say "yes" when Rusty Etwiler contacts you for help -- or surprise her and volunteer. **Contact Rusty at rustye.wa@netzero.com or 206-633-1512.**

Complete and Return

Please check next to your name on the mailing label. If the year is 2003, your dues are paid for this year. Even if your dues are paid, please complete and return the form to Bill Dameron if your address or e-mail address have changed. Mark "already paid" on the form to indicate your dues are current.

If there is NOT a 2003 next to your name on the mailing label, please mail the completed form and a check for \$15 to Bill by June 1st.

After June 1st, we will not accept annual dues for 2003. Dues for 2004 can be paid any time from receipt of the symposium registration form (in June 2003) through May 2004. Dues paid at the annual September symposium are for the next calendar year. We strongly encourage you to pay your dues with your symposium registration or by the time of the symposium if you do not attend.

Name

Already Paid

Street Address

Mail to:

Bill Dameron, Treasurer
PNWFM
1609 NW 79th Circle
Vancouver, WA 98665

City, State ZIP

()

Phone Number

Or e-mail:

baritebill@aol.com

E-mail Address

Noble Witt Award Call for Nominees

If a member of the FM community stands out to you as making great contributions to minerals, the science and the life-long hobby, please submit your nomination to one of the Board members. All nominees will be considered and the recipient will be honored at the Symposium.

2002 John Lindell
2001 Harvey Gordon
2000 Rudy Tschernich
1999 Bob Boggs
1998 Arlene Handley
1997 Richard and Helen Rice
1996 Ray Lasmanis
Cheryl Burchim
1995 Norm Steele
1994 Bob Smith
1993 Mike Groben

Pacific Northwest Chapter
FRIENDS OF MINERALOGY

Jade Wieting, 1841 NE 58th Ave., Portland, OR 97213